



# Site Map

Community located in Licton Springs  
on Midvale Ave N

# VWP

## REAL ESTATE

WINDERMERE  REAL ESTATE

Visit [vwpre.com](http://vwpre.com) to get updated pricing or contact the account manager below

# 10306 A-E

Midvale Ave N, Seattle 98133

Community Specs:

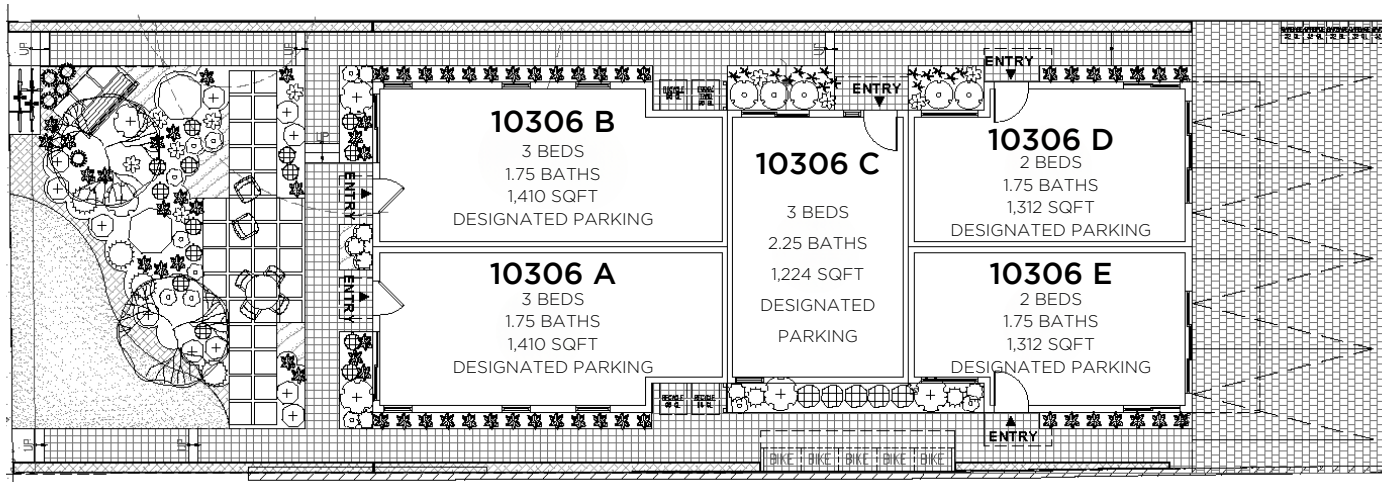
2 - 3 Beds

1.75 - 2.25 Baths

1,224 - 1,410 Sq. Ft.

Designated Parking

MIDVALE AVE E



Built by

## Midvale Homes

Contact Erin Porter with VWP Real Estate for more info:

Erin Porter: 206-582-8936 | [erinporter@windermere.com](mailto:erinporter@windermere.com)

N↑

*Floor plans are provided for illustrative and general informational purposes only. Buyer to verify all information to their own satisfaction.*

WRE - Cap Hill | VWP Real Estate